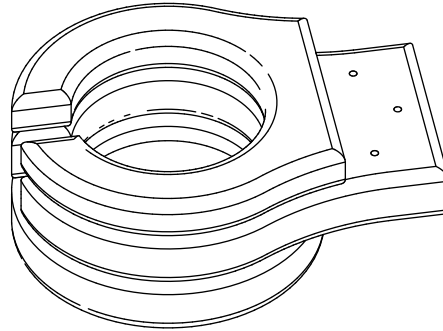




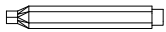
Hardware
3= 1 1/2" Screws

Cup Holder x1

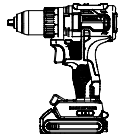


Tools Required

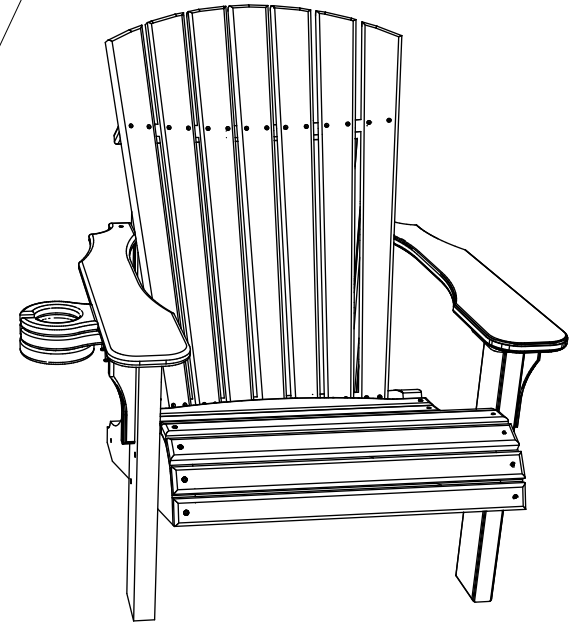
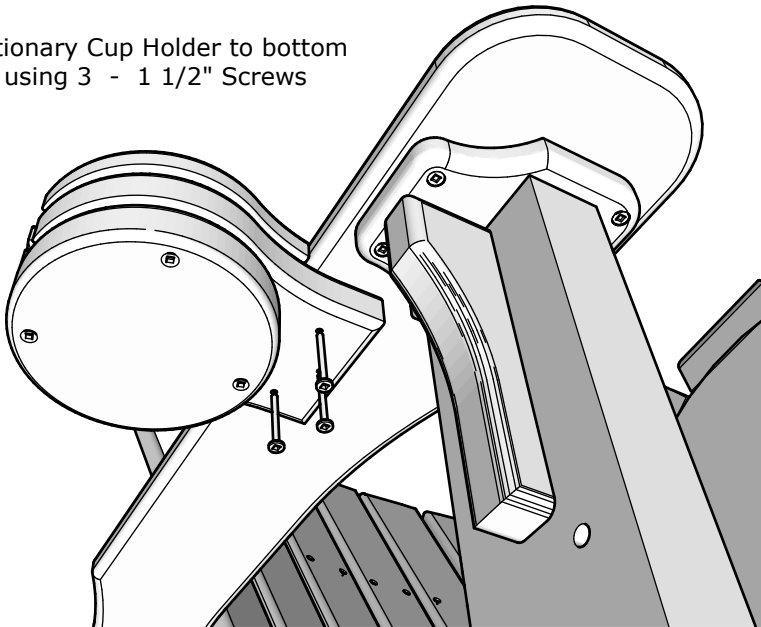
#2 Square Drive Bit
(Not Included)



Cordless Drill
(Not Included)



Attach Stationary Cup Holder to bottom
of Armrest using 3 - 1 1/2" Screws



Stationary Cup Holder Assembly Instructions

11/21/ 2024

R.M.