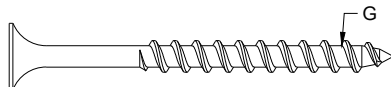
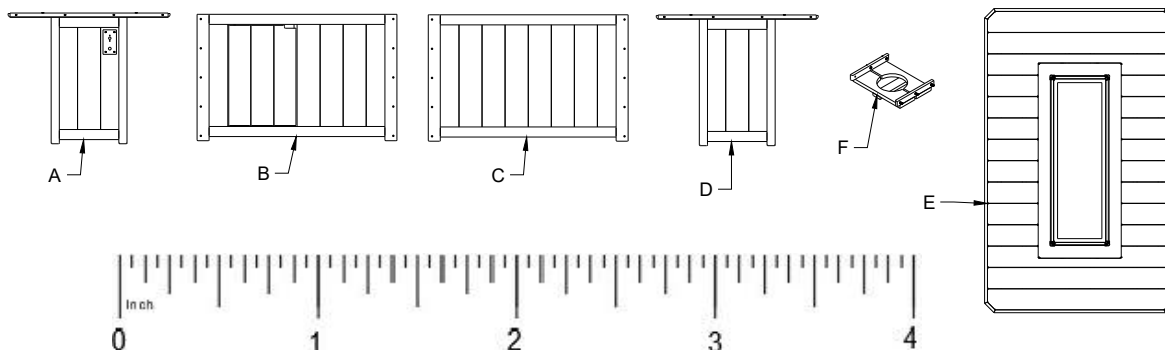


Tools Required	
#2 Square Drive Bit (not Included)	
$\frac{5}{32}$ " Allen Key (Included)	
For Burner Assembly Tools. See page 8 in the burner Manual	

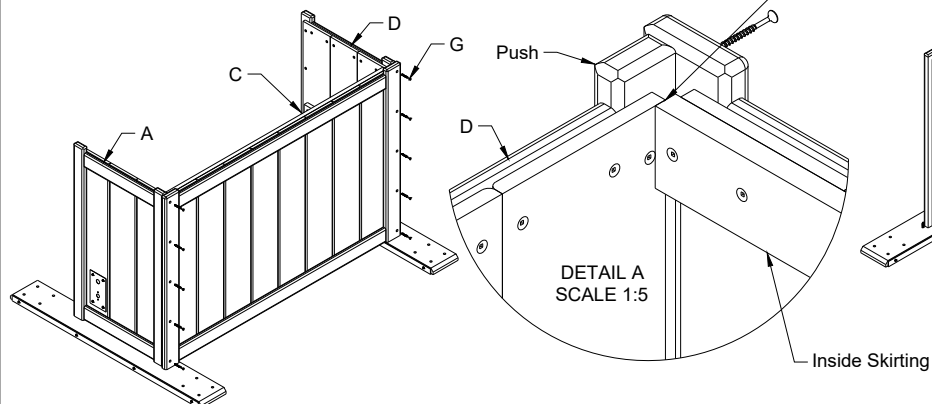
Fire Table Parts List	
1	A Left End Panel with Control Panel
1	B Front Panel with Door
1	C Backside Panel
1	D Right End Panel
1	E Top
1	F Floor
44	G 2" Stainless Steel Screws
6	H $\frac{5}{16}$ "X1 $\frac{1}{2}$ "Stainless Steel Wafer Bolt



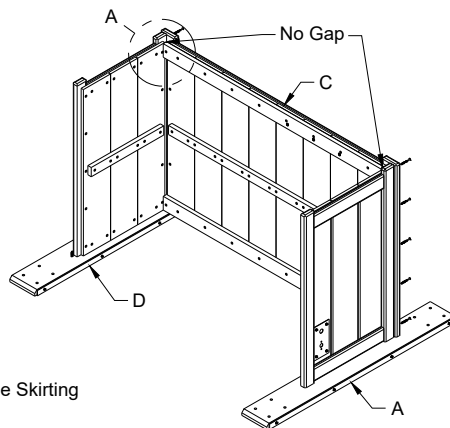
Assembly Instructions



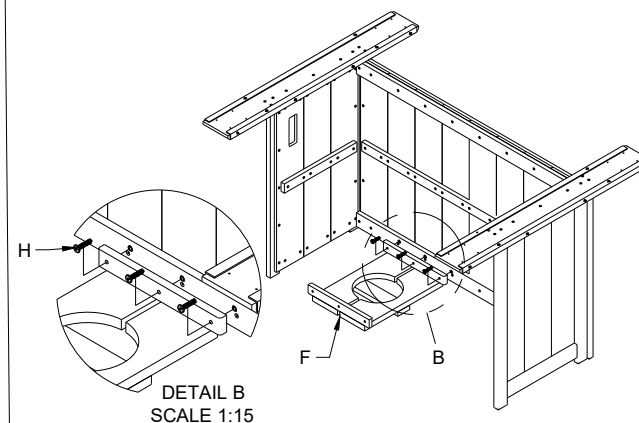
1. Choose a flat surface to assemble your furniture.
2. Attach (C) Backside Panel to (A) & (D) End Panels using 10-(G) 2" Screws in the predrilled holes.



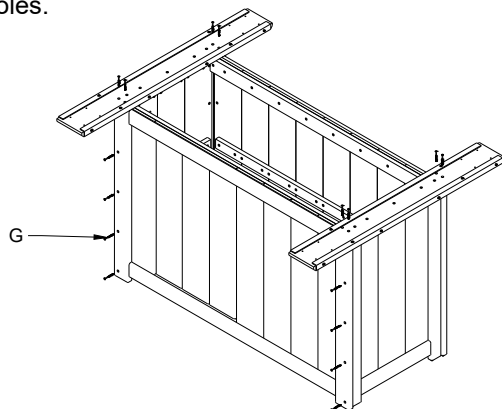
3. Note. Push End Panels against inside Skirting when installing Screws.



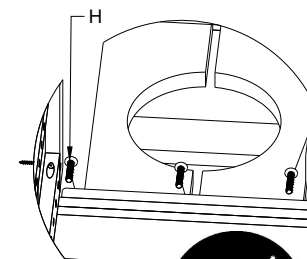
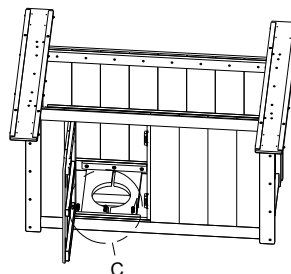
4. Attach 1 side of the (F) Floor to backside using 3-(H) $\frac{5}{16}$ "X1 $\frac{1}{2}$ " Wafer Bolts.



5. Attach (B) Front Panel with the Door to (A) & (D) End panels using 10-(G) 2" Screws in predrilled holes.



6. Attach Front Side of (F) Floor to (B) Front Side Panel using 3-(H) $\frac{5}{16}$ "X1 $\frac{1}{2}$ " Wafer Bolts.

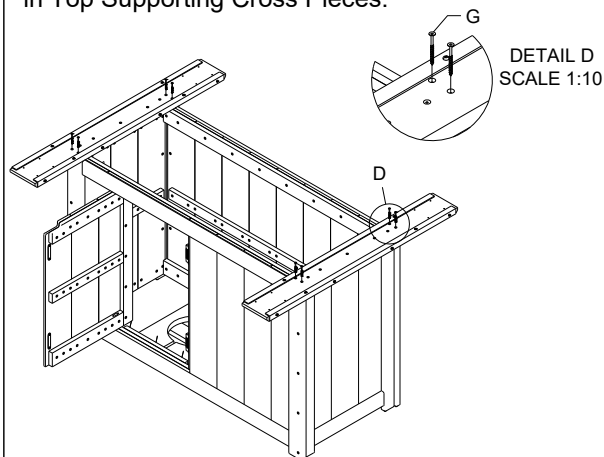


DETAIL C
SCALE 1:10

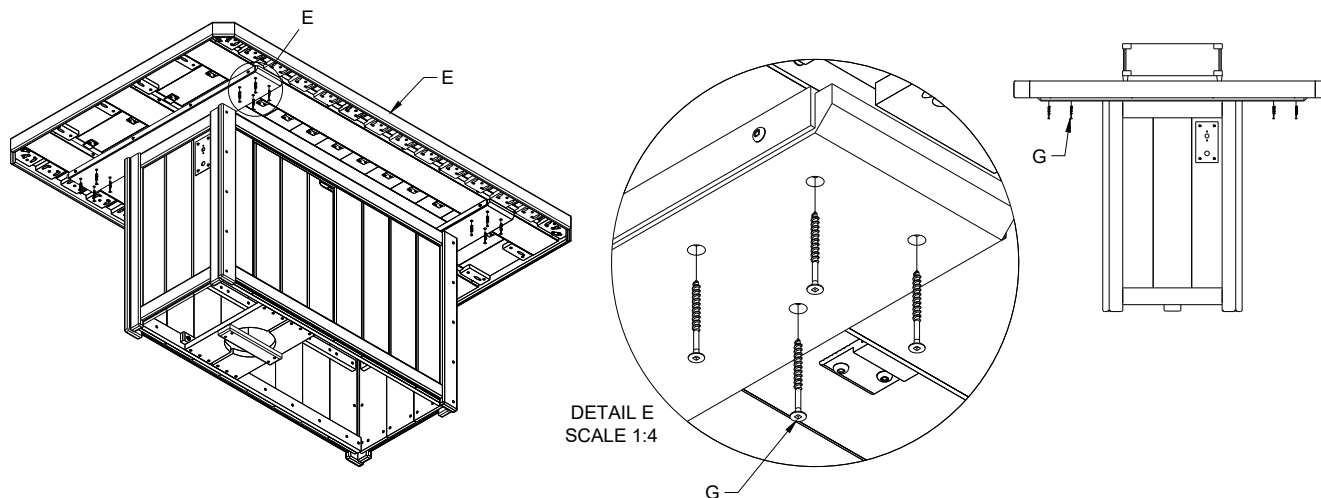
Lumin Fire Table 79" Rectangular Counter Height



7. Install 8-(G) 2" Screws in predrilled holes in Top Supporting Cross Pieces.



8. Position (E) Top on assembled Base, align with marks on Top. Attach Top using 16-(G) 2" Screws in predrilled holes.



9. Read, Understand and follow "Burner Instruction Manual" for safe operation.

10. Follow instructions in "Burner Installation Section" starting on page 6 in the manual. Get someone to help attach Igniter, and Burner Control, to the Control Plate.

11. Assemble Wind Guard. **"Always keep Wind Guard in place with lighted burner"!!!!!!**

