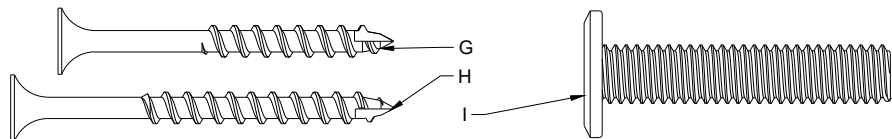




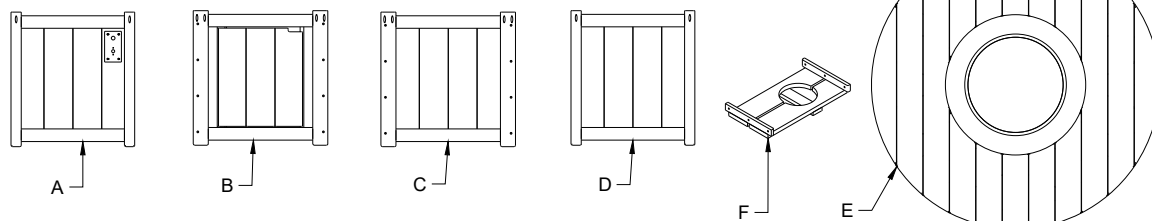
Lumin Fire Table 60" Round Parts List

1	A	Left End Panel with Control Panel
1	B	Front Panel with Door
1	C	Backside Panel
1	D	Right End Panel
1	E	Top
1	F	Floor
12	G	1 3/4" Stainless Steel Screws
16	H	2" Stainless Steel Screws
6	I	5/16"X1 1/2" Stainless Steel Wafer Bolt

Tools Required
 #2 Square Drive Bit (not Included)
 5/32" Allen Key (Included)
 For Burner Assembly Tools. See page 8 in the burner Manual

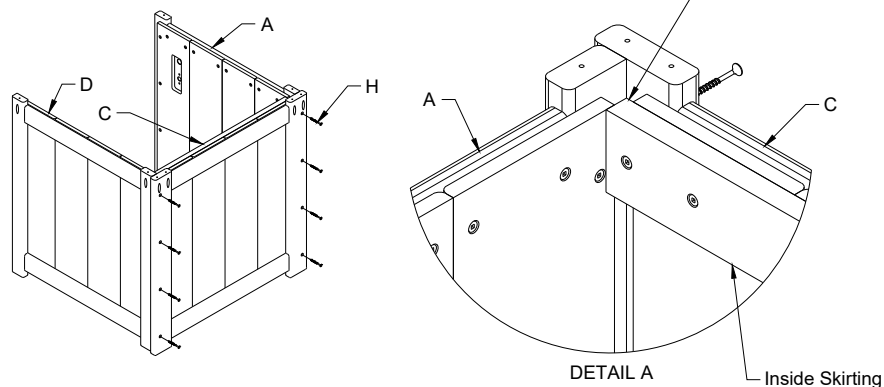


Assembly Instructions

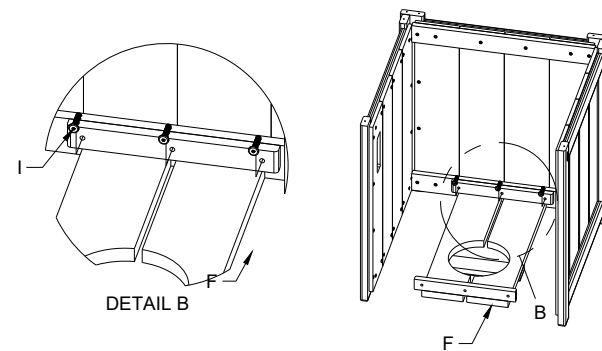


1. Choose a flat surface to assemble your furniture.
2. Attach (C) Backside Panel to (A) & (D) End Panels using 8 (H) 2" Screws in the predrilled holes.

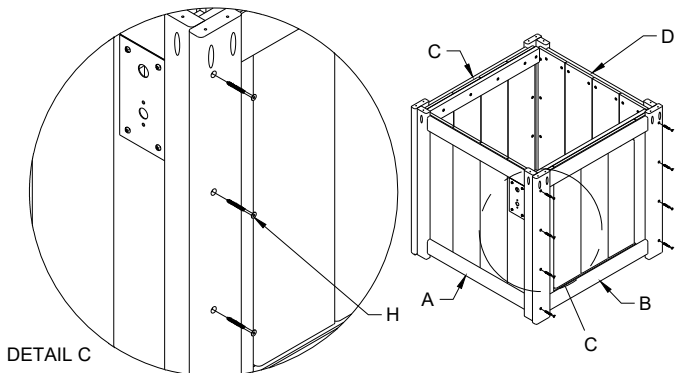
3. Note. Push End Panels against inside Skirting when installing Screws.



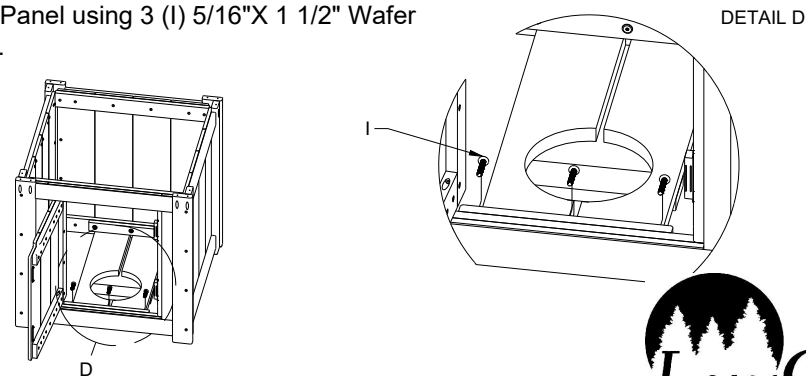
4. Attach 1 side of the (F) Floor to backside using 3 (I) 5/16"X1 1/2" Wafer Bolts.



5. Attach (B) Front Panel with the Door to (A) & (D) End panels using 8 (H) 2" Screws in predrilled holes.

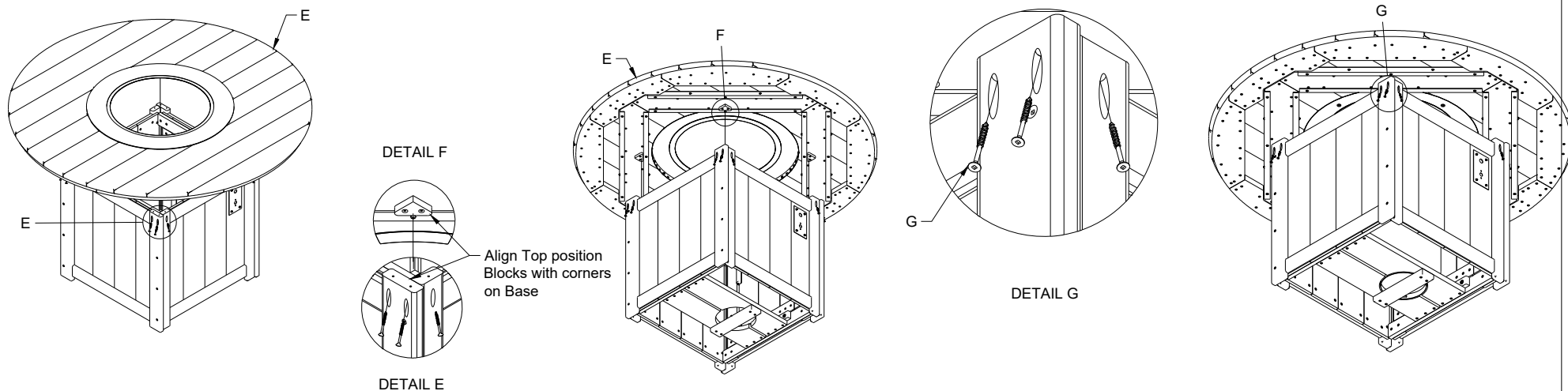


6. Attach Front Side of (F) Floor to (B) Front Side Panel using 3 (I) 5/16"X1 1/2" Wafer Bolts.



Assembly Instructions

7. Position (E) Top on assembled Base, align corners of base with blocks on Top. Attach Top using 12 (G) 1 $\frac{3}{4}$ " Screws in predrilled holes.



8. Read, Understand, and follow "Burner Instruction Manual" for safe operation.

9. Follow instructions in "Burner Installation Section" starting on page 6 in the manual. Get someone to help attach Igniter, and Burner Control, to the Control Plate.

10. Assemble Wind Guard. **"Always keep Wind Guard in place with lighted burner"!!!!!!**

