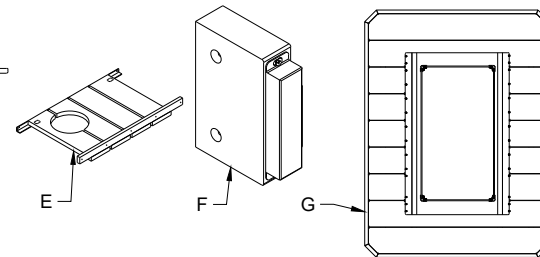
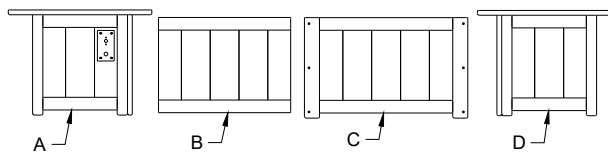
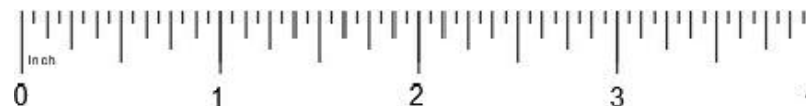


Fire Table Parts List		
1	A	Left End Panel with Control Panel
1	B	Door Panel
1	C	Backside Panel
1	D	Right End Panel
1	E	Floor
2	F	Door Stop Block
1	G	Top
4	H	$\frac{3}{4}$ " Stainless Steel Screws
5	I	$1\frac{1}{2}$ " Stainless Steel Screws
16	J	$1\frac{3}{4}$ " Stainless Steel Screws
14	K	2" Stainless Steel Screws

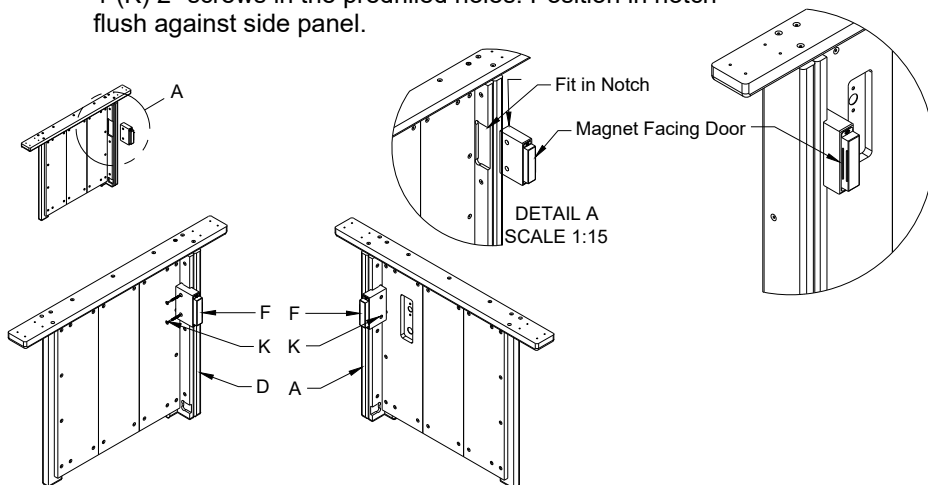
Assembly Instructions



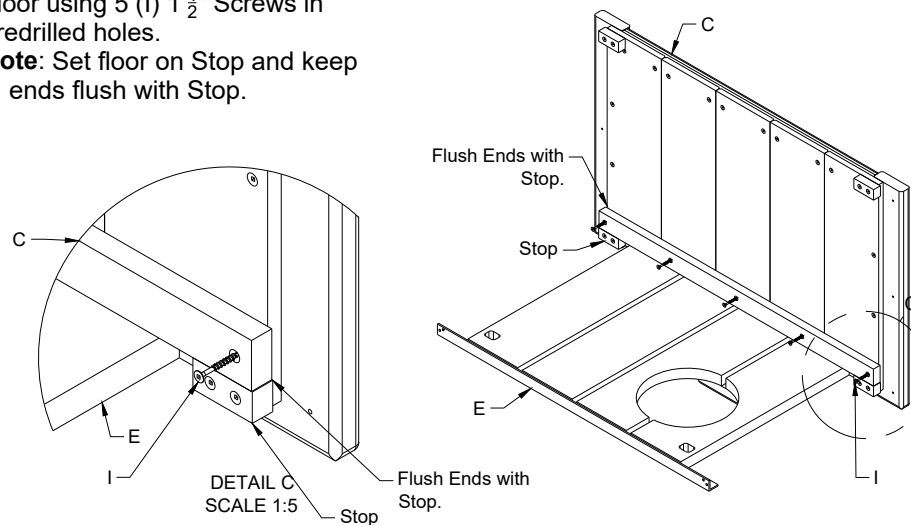
Tools Required	
#2 Square Drive Bit (not Included)	
For Burner Assembly Tools. See page 8 in the burner Manual	



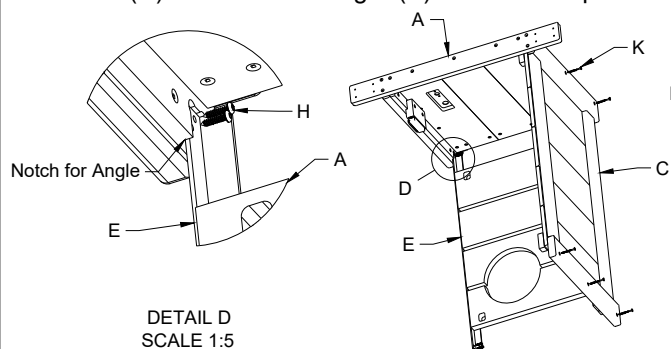
1. Choose a flat non-marking surface to assemble your furniture.
2. Attach (F) Door Stop Block to (A) & (D) End Panels using 4-(K) 2" screws in the predrilled holes. Position in notch flush against side panel.



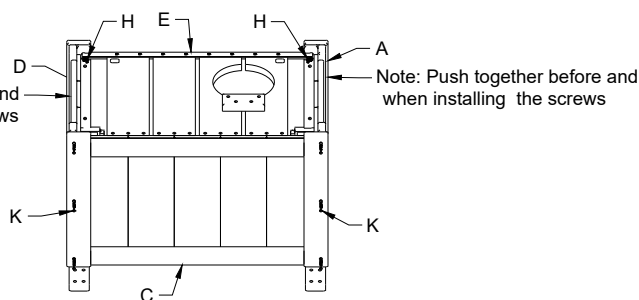
4. Attach (C) Backside Panel to (E) Floor using 5 (I) $1\frac{1}{2}$ " Screws in predrilled holes.
Note: Set floor on Stop and keep ends flush with Stop.



4. Position Aluminum Angle (E) into Notch of (A) Left End. Note: Push (A) Left End against Notch and Stops before attaching, using 2-(H) $\frac{3}{4}$ " Screws. Attach (A) End Panel to (C) Back Panel using 3-(K) 2" screws in predrilled holes.



5. Repeat step 4 to Attach (D) Right End.

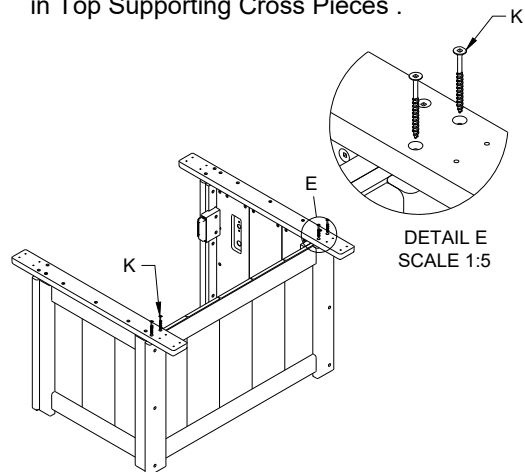


Lumin Fire Pit 51" Rectangular

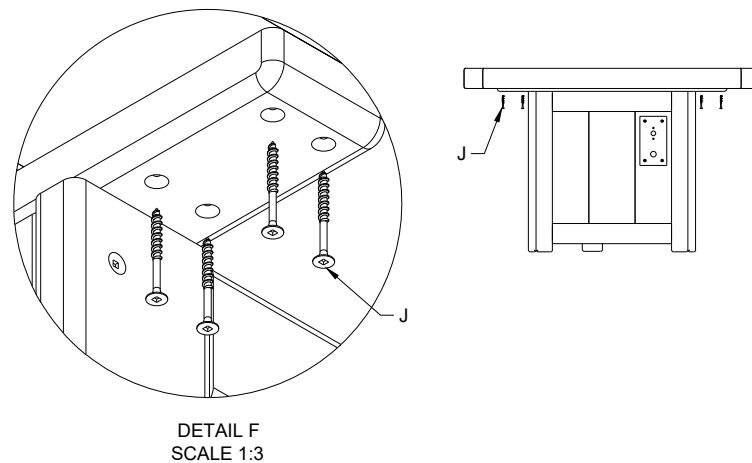
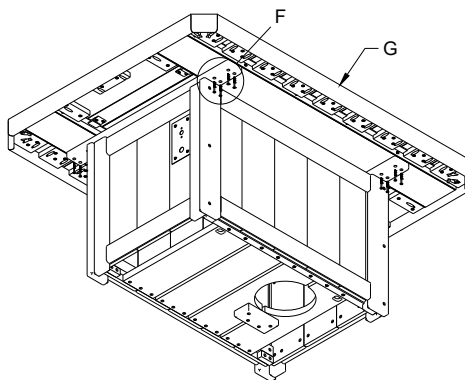


Assembly Instructions

6. Install 4-(K) 2" Screws in predrilled holes in Top Supporting Cross Pieces .



7. Position (G) Top on assembled Base, align with marks on Top. Install the door and check clearance approximately $\frac{1}{8}$ " on each side. Attach Top using 16-(J) $1\frac{3}{4}$ " Screws in predrilled holes.



8. Read, Understand and follow "Burner Instruction Manual" for safe operation.

9. Follow instructions in "Burner Installation Section" starting on page 6 in the manual. Attach Igniter, and Burner Control, to the Control Plate.

10. Assemble Wind Guard. **"Always keep Wind Guard in place with lighted burner"!!!!!!**

